

Copper-Gold Discovery Undercover

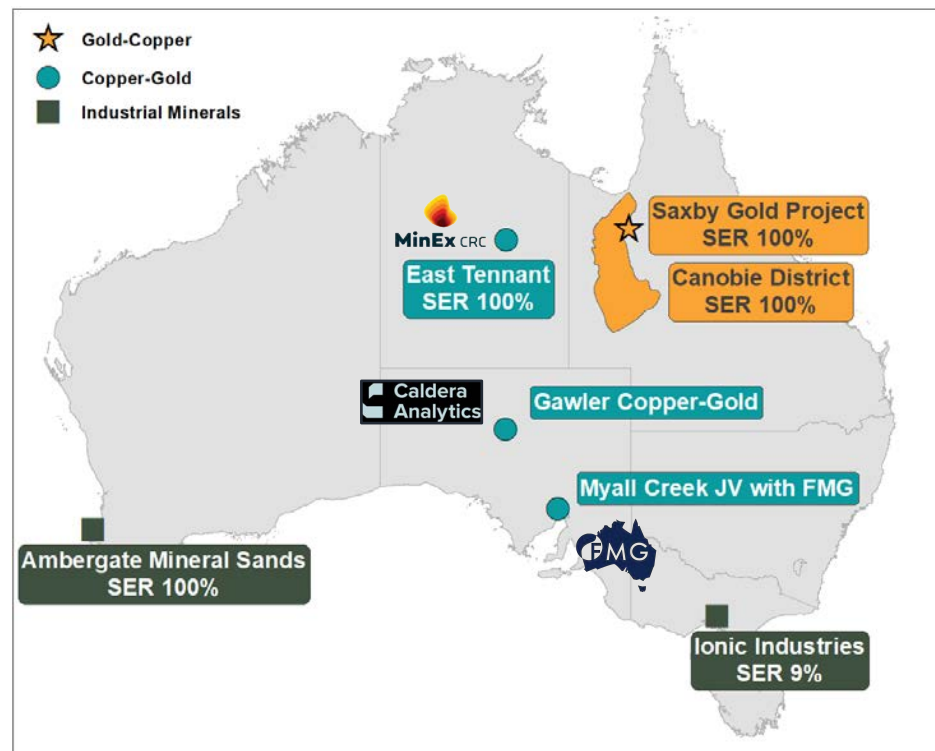
Competent Person Statements

The information in this report that relates to Exploration Results is based on information compiled by Mr Stuart Rechner BSc (Geology) MAIG MAusIMM, a Member of Australian Institute of Geoscientists and the Australasian Institute of Mining and Metallurgy. Mr Rechner is a Director and shareholder of Strategic Energy Resources Ltd. Mr Rechner has sufficient experience which is relevant to the styles of mineralisation and types of deposits under consideration and to the activity being undertaken to qualify as a Competent Person as defined in the 2012 Edition of the 'Australasian Code for Reporting of Exploration Results, Mineral Resources and Ore Reserves'. Mr Rechner consents to the inclusion in this report of the matters based on his information in the form and context in which it appears.

2020 Highlights

Specialist undercover Cu-Au Explorer

- **Saxby Gold** extensional drilling complete
- **Canobie District** entire belt secured
- **East Tennant Copper-Gold** ground secured
 - Gravity survey completed
 - MinEx CRC drilling now (6 of 10 holes complete)
- **Myall Creek Copper-Gold** JV with FMG
 - Airborne magnetic survey completed
 - Land access well advanced
- **Gawler Copper-Gold** partnership with Caldera
 - Gravity survey completed at Billa Kalina
- **Industrial Mineral Assets** creating value
 - Sale of Uley Graphite Mine Royalty
- **New Cornerstone Institutional Shareholder**



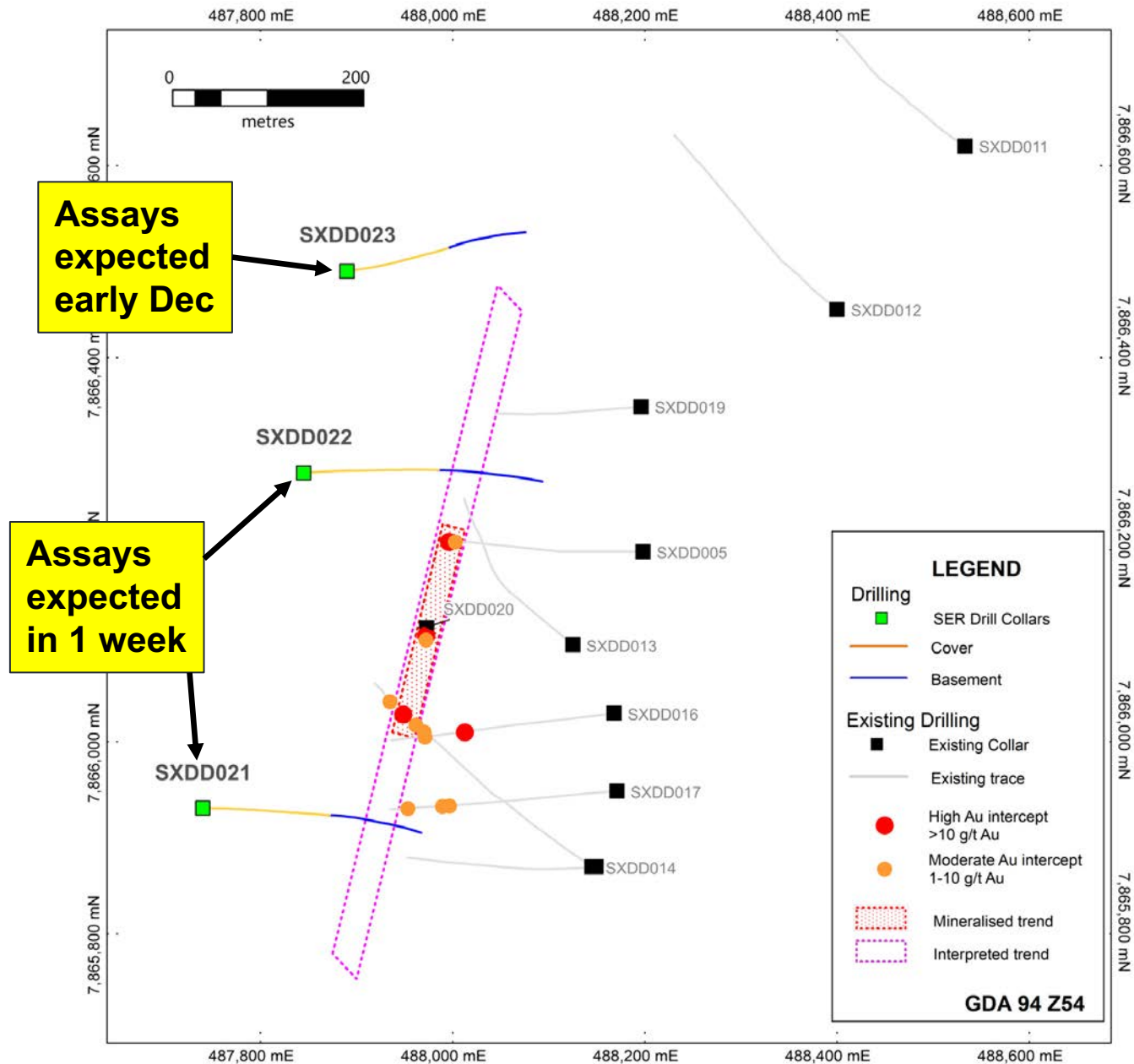
CAPITAL STRUCTURE (ASX:SER)

Shares on issue	160m
Market capitalisation (@ 0.6c)	\$9.6m
Cash (30 September 2020)	\$1.9m
Top 20 Shareholders	53%

BOARD & MANAGEMENT

Executive Chairman	Stuart Rechner BSc LLB MAIG MAusIMM GAICD
Director	David DeTata BSc MSc PhD MBA GAICD
Director	Anthony McIntosh BCom GAICD
Exploration Manager	Neil Chalmers BSc (Hons) MAIG

Saxby Gold Project



Canobie District: a new mineral province?

Architecture

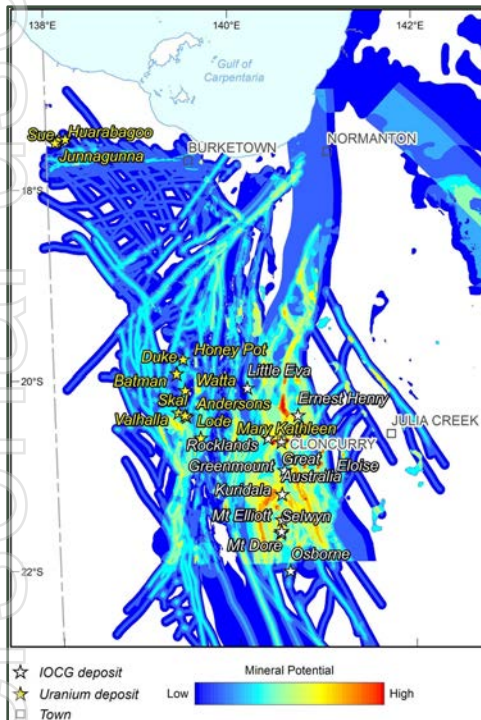
- trans-crustal / trans-lithospheric structures
- reactivated architecture at orogenic margin

Energy (drivers of hydrothermal fluids)

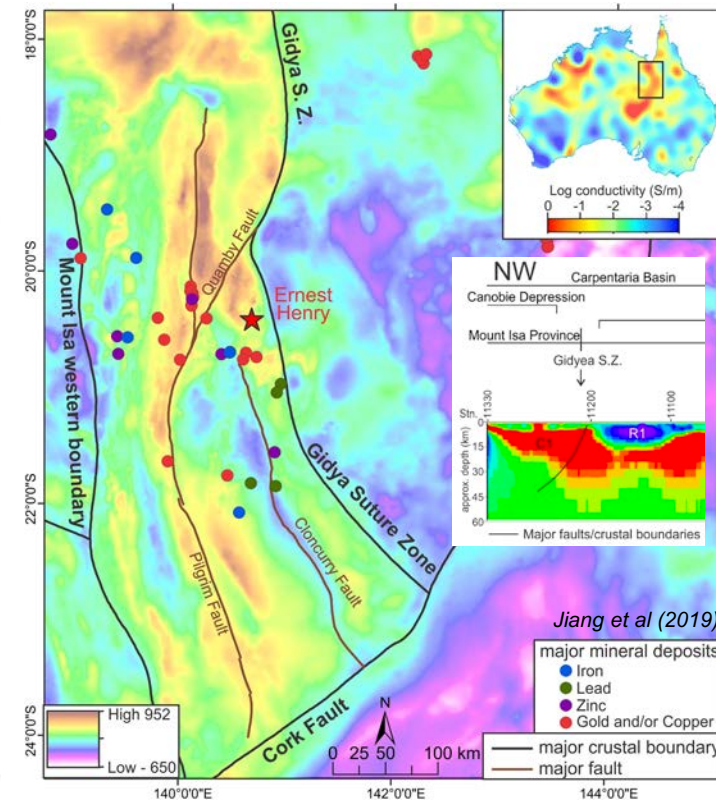
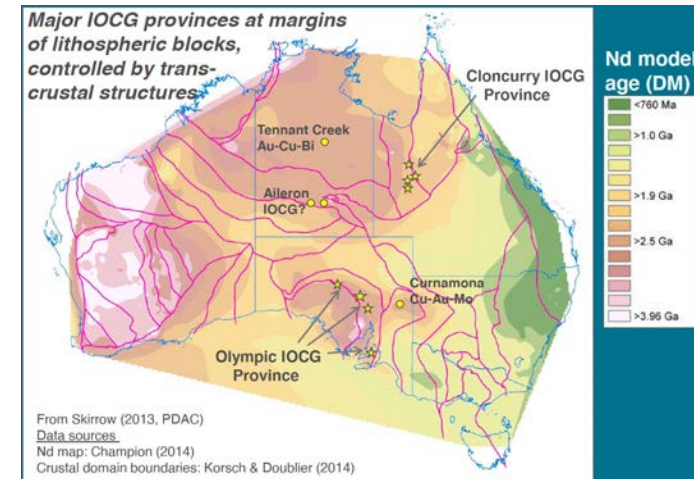
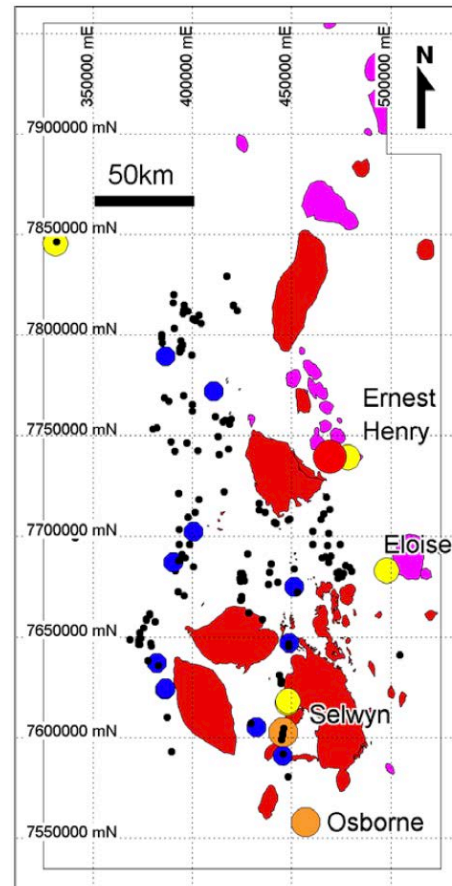
- high-temp felsic and coeval mafic magmatism

Metal and fluid sources

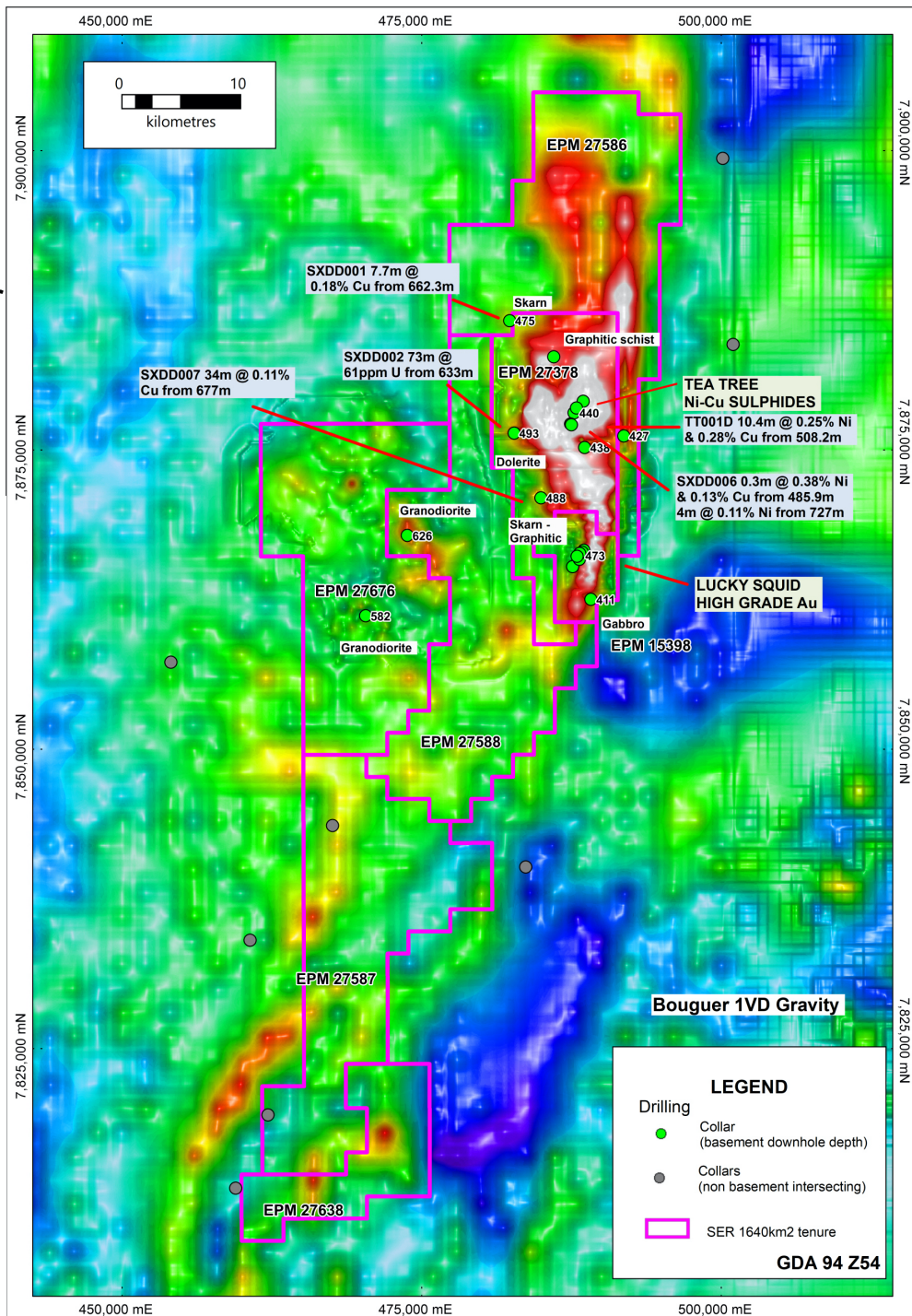
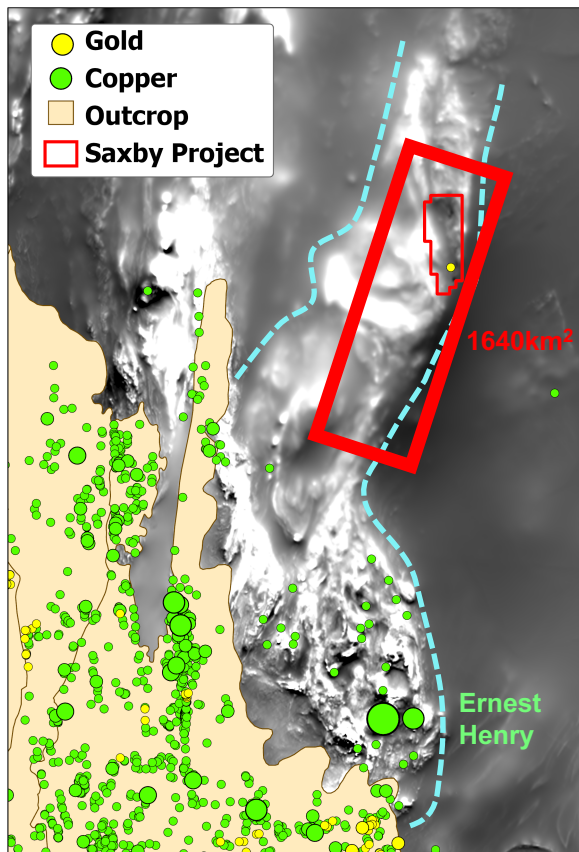
Ore depositional gradients



Skirrow et al (2019)

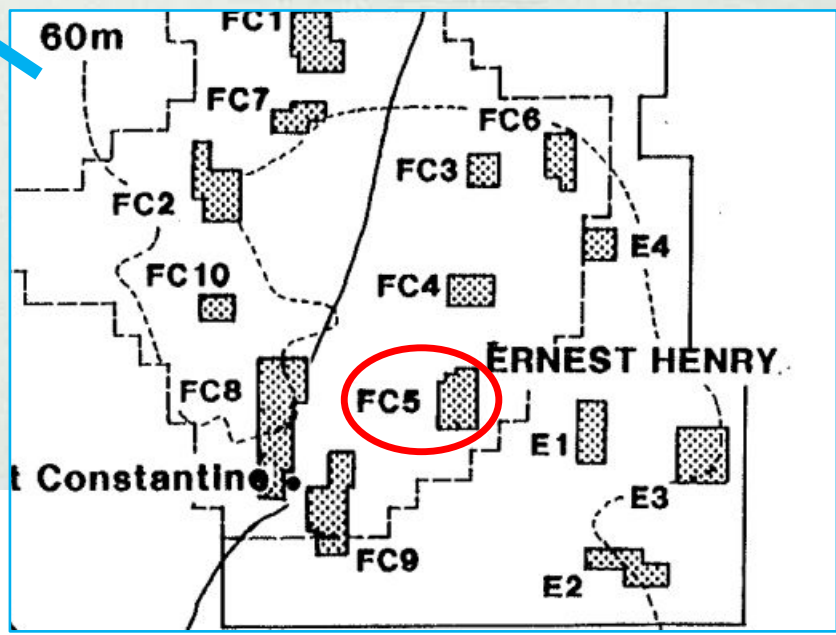
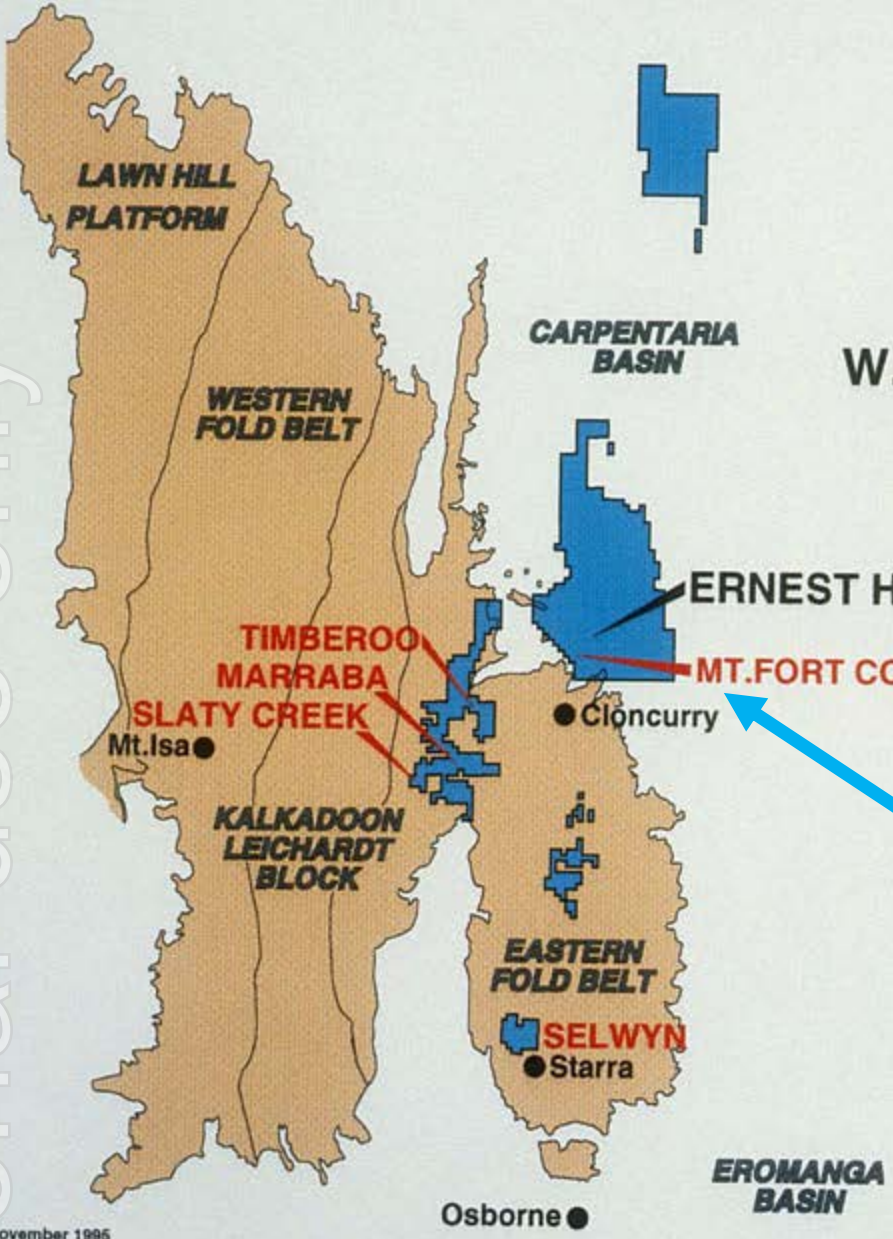


- Very limited historical drilling (33 holes)
- 25 holes penetrated Proterozoic basement
 - 10 @ Saxby (Lucky Squid)
 - 5 @ Tea Tree (Ni-Cu sulphides in gabbro)
 - 10m @ 0.28% Cu and 0.25% Ni
 - **ONLY 10 @ regional targets**
- Numerous significant intersections of copper and uranium mineralisation in isolated drillholes within intensely altered rocks
 - never followed up
- Extraordinary strike rate

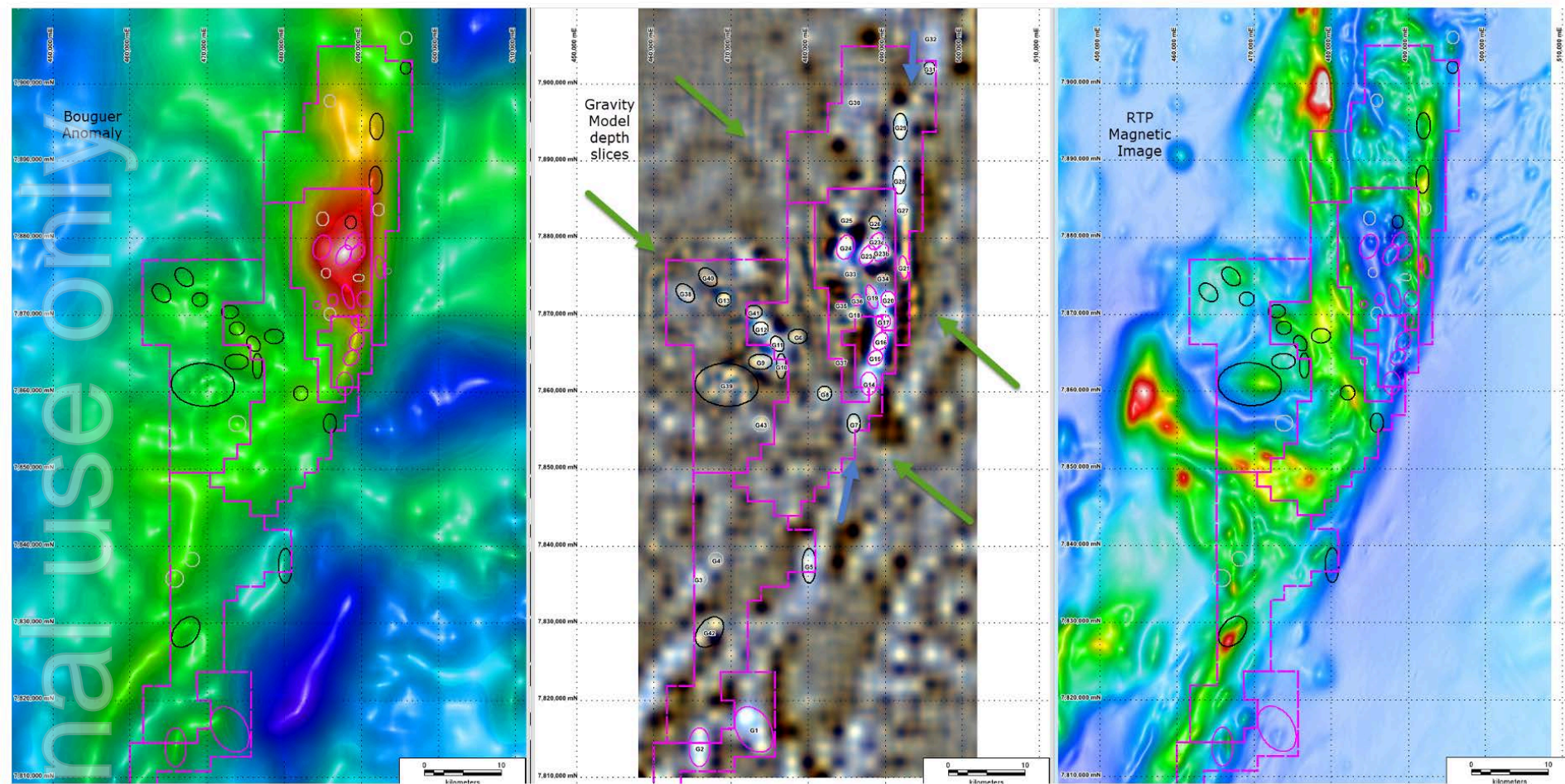




ERNEST HENRY DEPOSIT AREAS COVERED BY W.M.C CLONCURRY GOLD PROJECT TENEMENTS SINCE 1987



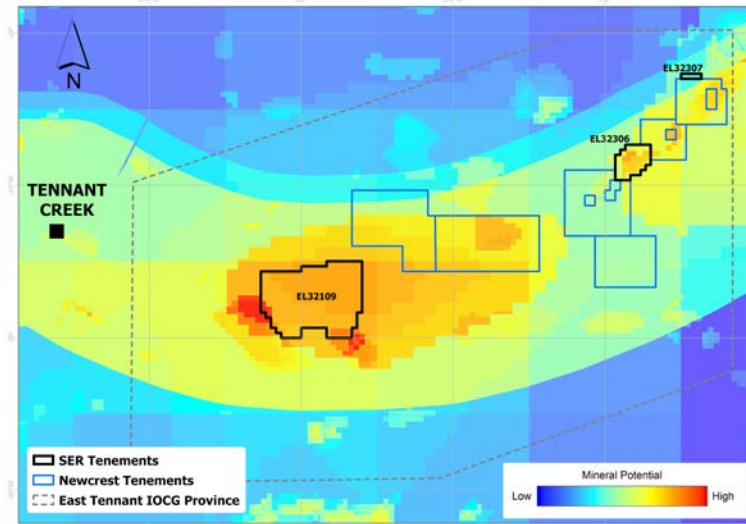
ersonal use only



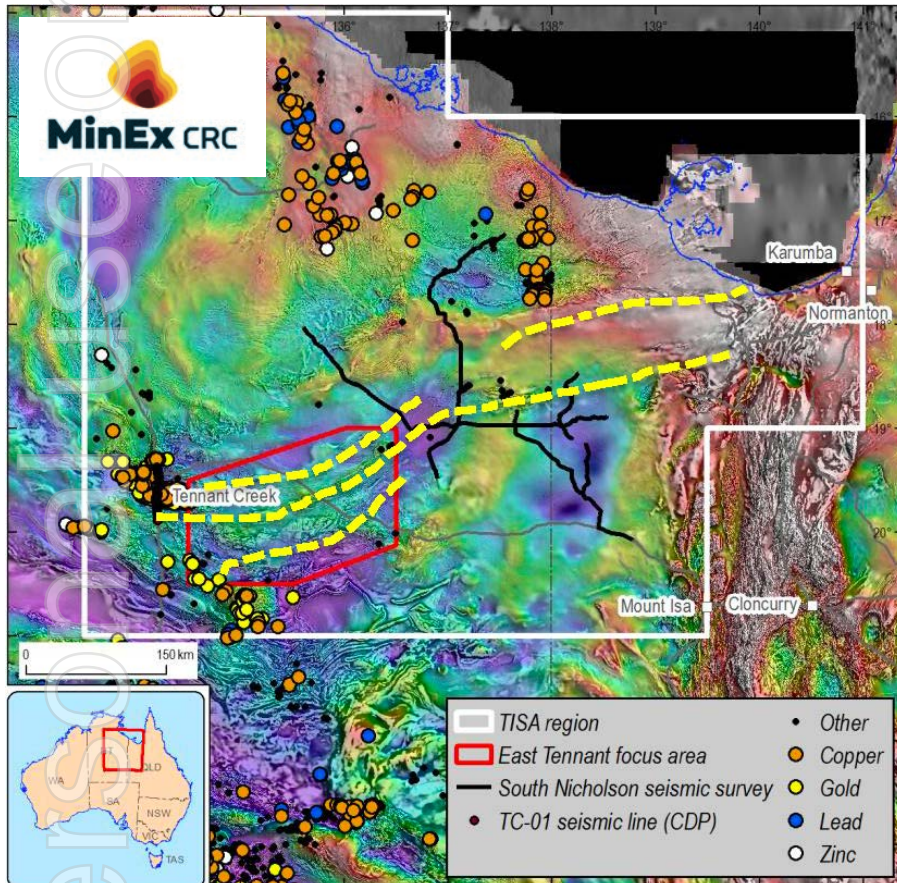
Gravity anomalies on Bouguer anomaly image, gravity model depth slice and RTP magnetic image

East Tennant Copper-Gold

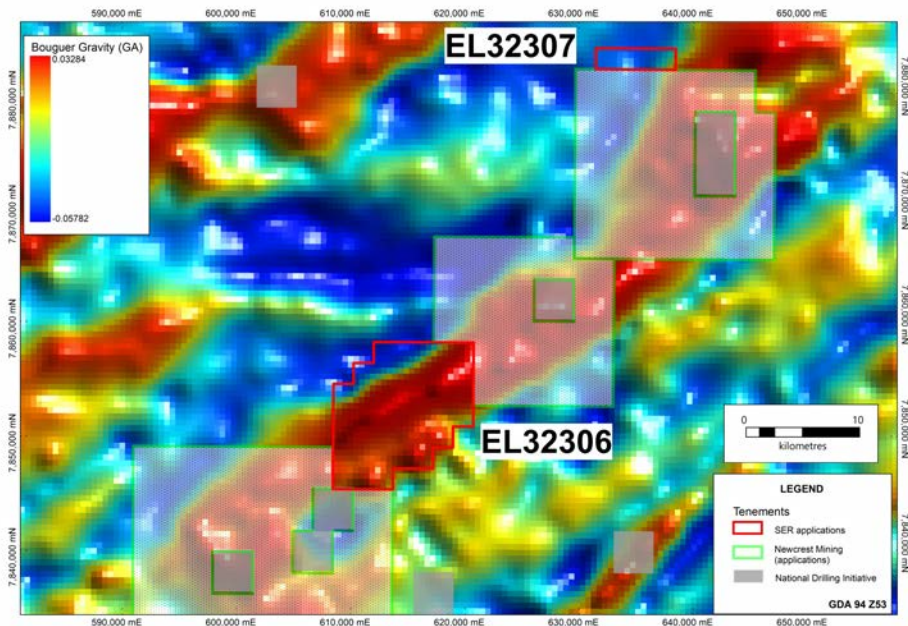
- Key Cu-Au exploration licences in emerging IOCG terrane
 - SER surrounded by Newcrest
- Extensive detailed ground gravity over all SER ground
- MinEx CRC currently drilling regional stratigraphic holes
 - 6 holes (2264m) completed to date



IOCG Prospectivity map of East Tennant with SER applications



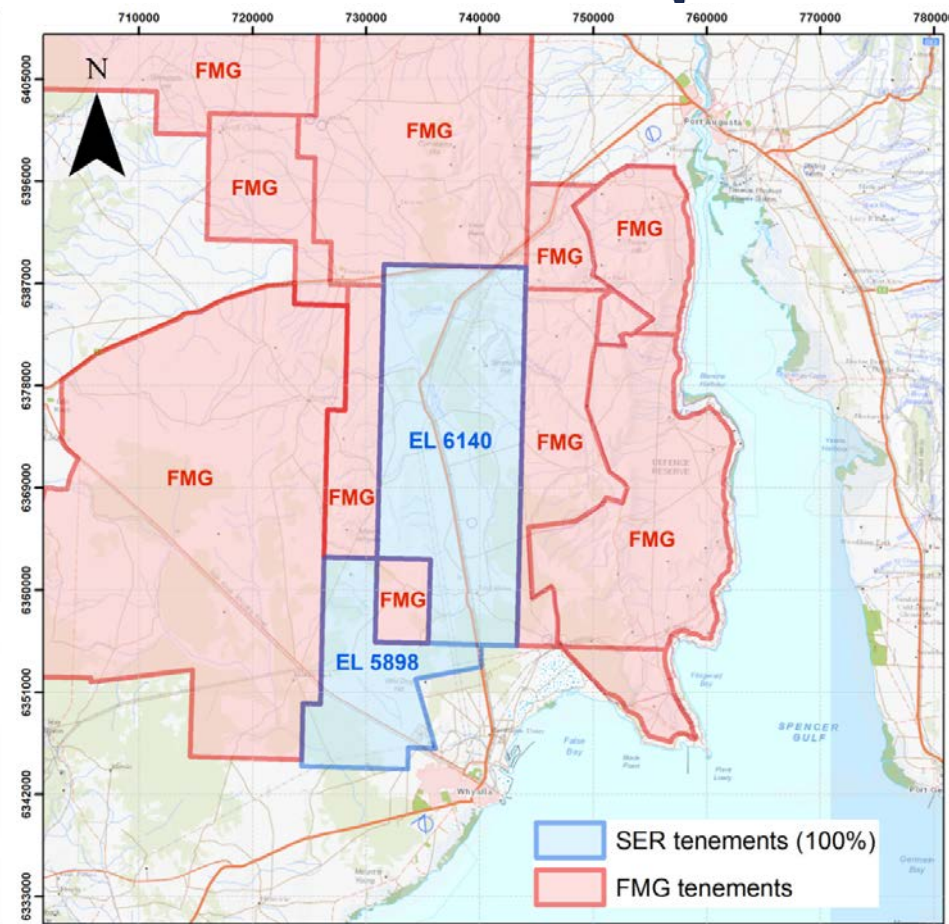
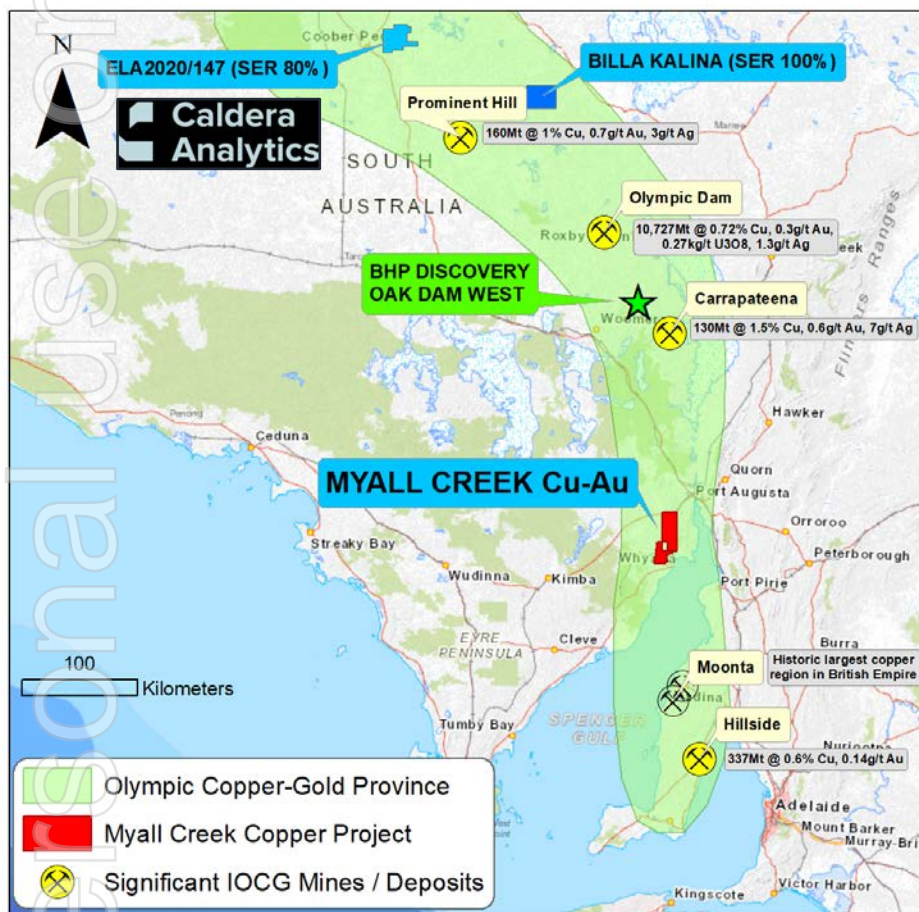
Tennant Creek to Mt Isa (TISA) region with crustal structures over gravity image



Bouguer Gravity map of SER's new applications EL32306 and EL32307

Gawler Craton Copper-Gold

- Prime locations in Olympic Copper-Gold Province
- Joint Venture with FMG at Myall Creek (minimum 1500m drilling)
- Compelling IOCG target at Billa Kalina
- Mabel Creek: Partnership with Caldera Analytics



Project Generation

