



Strategic Energy Resources

Investor Presentation
June 2020

ASX: SER

Australia's next high-grade gold Discovery

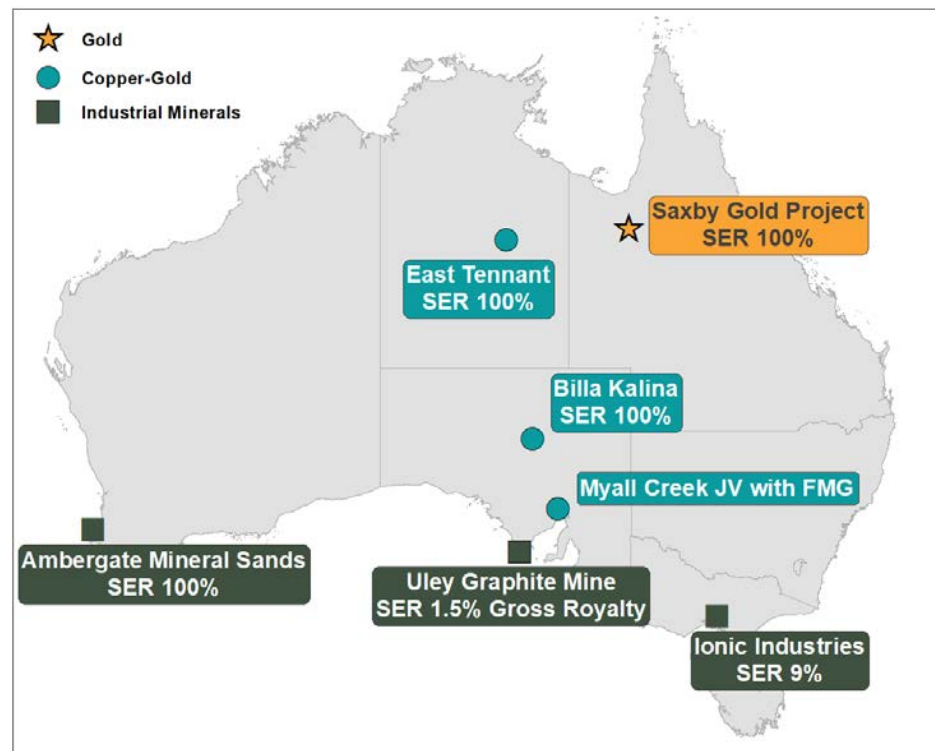
Competent Person Statements

The information in this document that relates to Exploration Results is based on information compiled by Mr Stuart Rechner BSc (Geology) MAIG, a Competent Person who is a Member of Australian Institute of Geoscientists. Mr Rechner is a Director of, and consultant to, Strategic Energy Resources Ltd. Mr Rechner has sufficient experience that is relevant to the style of mineralisation and type of deposit under consideration and to the activity being undertaken to qualify as a Competent Person as defined in the 2012 Edition of the 'Australasian Code for Reporting of Exploration Results, Mineral Resources and Ore Reserves'. Mr Rechner consents to the inclusion in the document of the matters based on his information in the form and context in which it appears.

Investment Snapshot

Specialist undercover Cu-Au Explorer

- Growing **high-grade Gold discovery** at Saxby
- Pipeline of **Copper-Gold drilling**
 - Significant IOCG target at Billa Kalina
 - FMG JV to drill for Cu-Au at Myall Creek
 - Key Cu-Au ground secured at East Tennant
- Realising value from **Industrial Mineral assets**
 - Substantial mineral sands resource
 - Royalty over fully permitted graphite mine
 - Major shareholder of graphene company



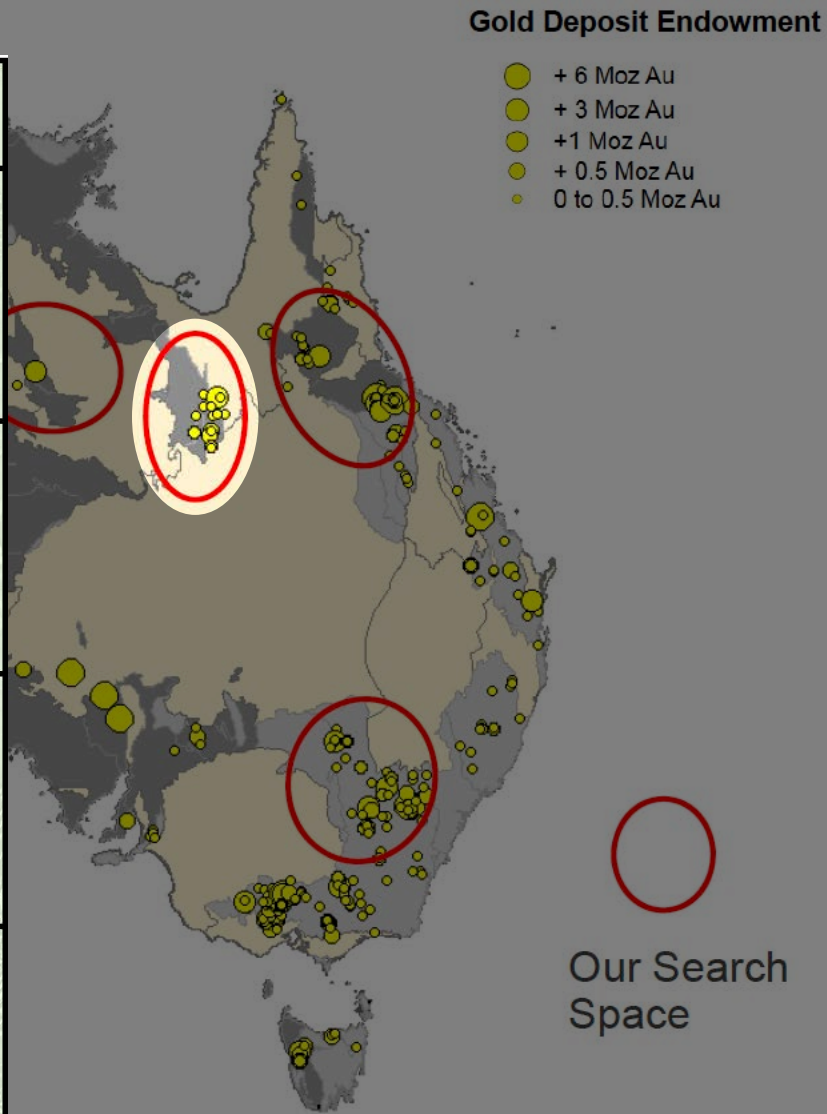
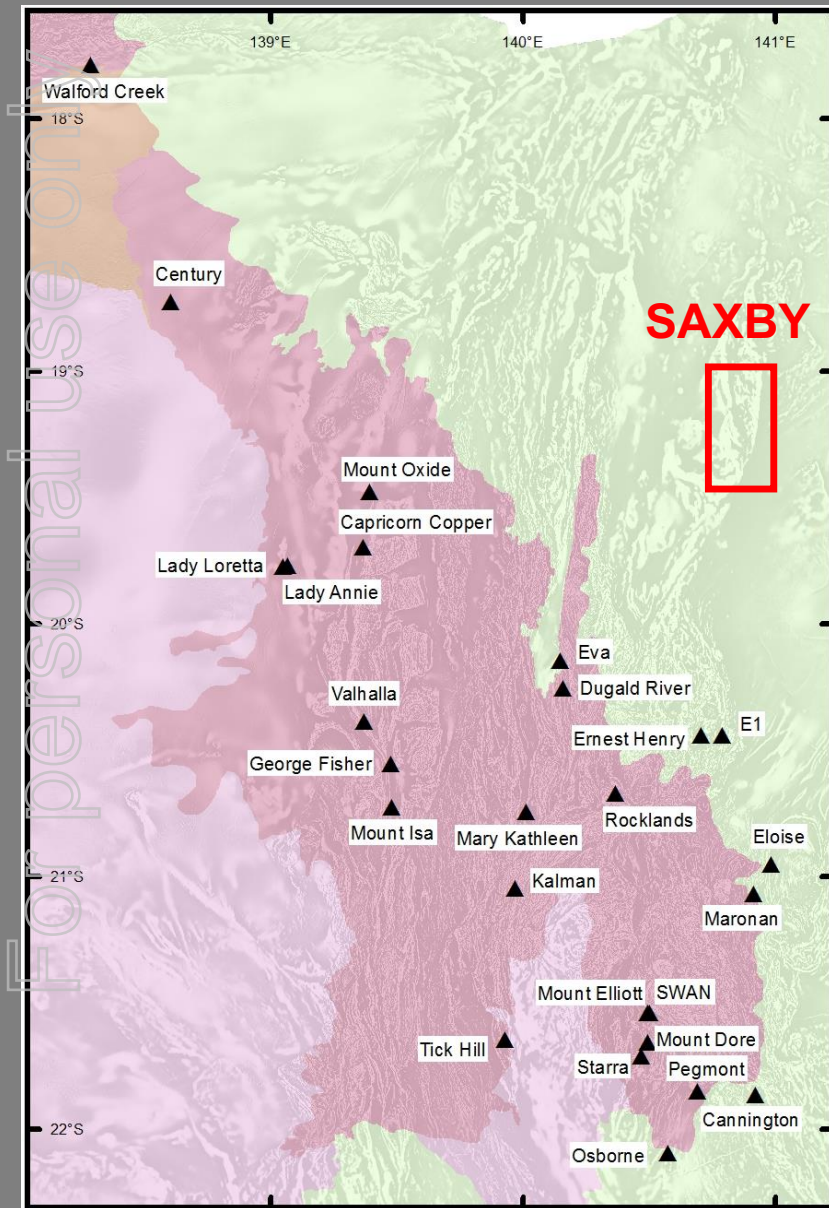
CAPITAL STRUCTURE (ASX:SER)

Shares on issue	950,000,000
Market capitalisation (@ 0.4c)	\$3.8m
Cash (31 March 2020)	\$356k
Top 20 Shareholders	50%

BOARD & MANAGEMENT

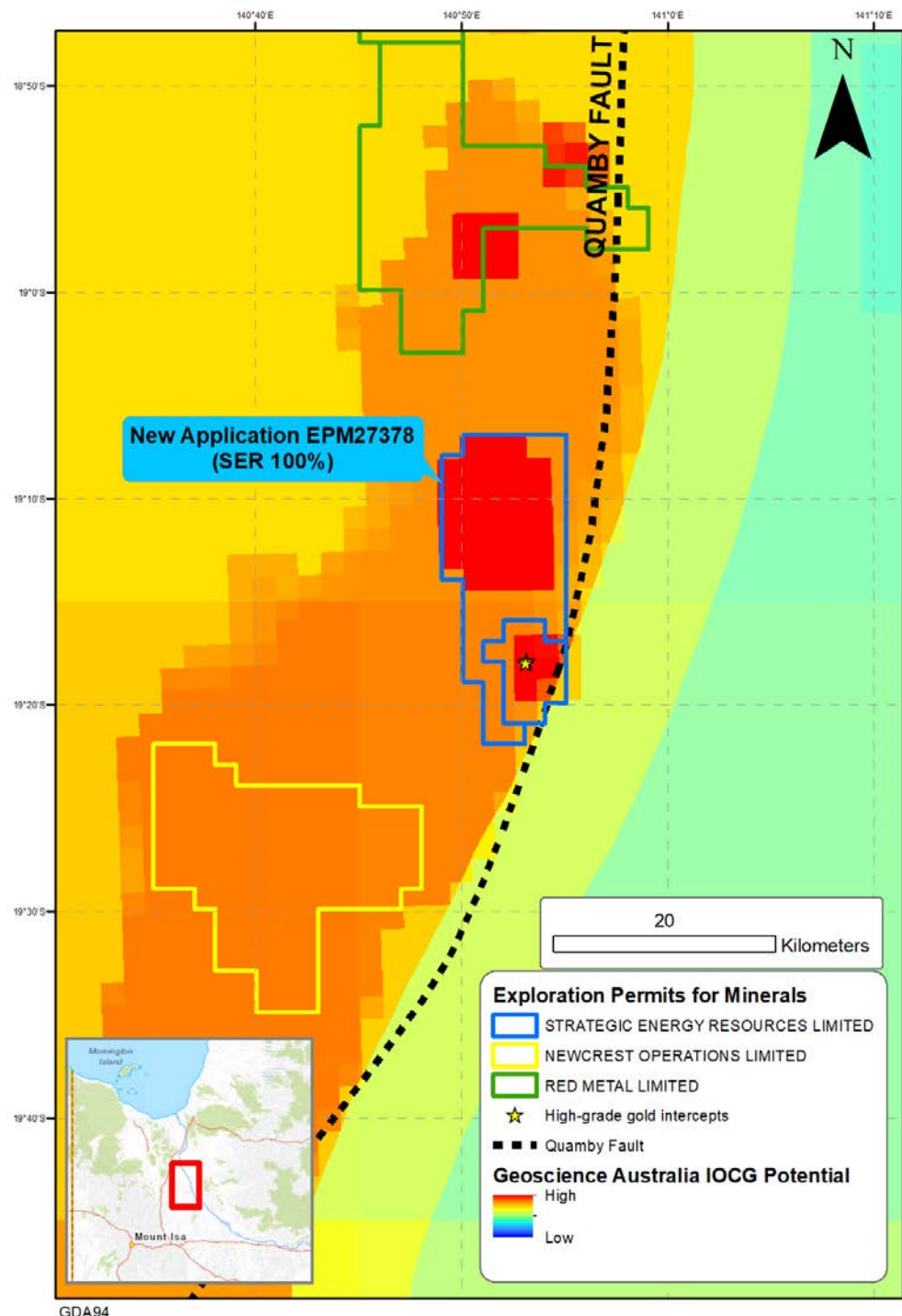
Chairman	Stuart Rechner BSc LLB MAIG GAICD
Director	David DeTata BSc MSc PhD MBA GAICD
Director	Harvey Kaplan LLB
Exploration Manager	Nick Burn BSc (Hons) MBA MAIG

Mt Isa Eastern Succession



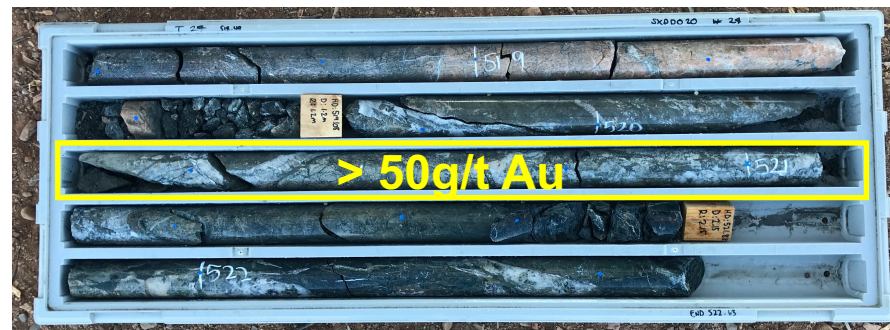
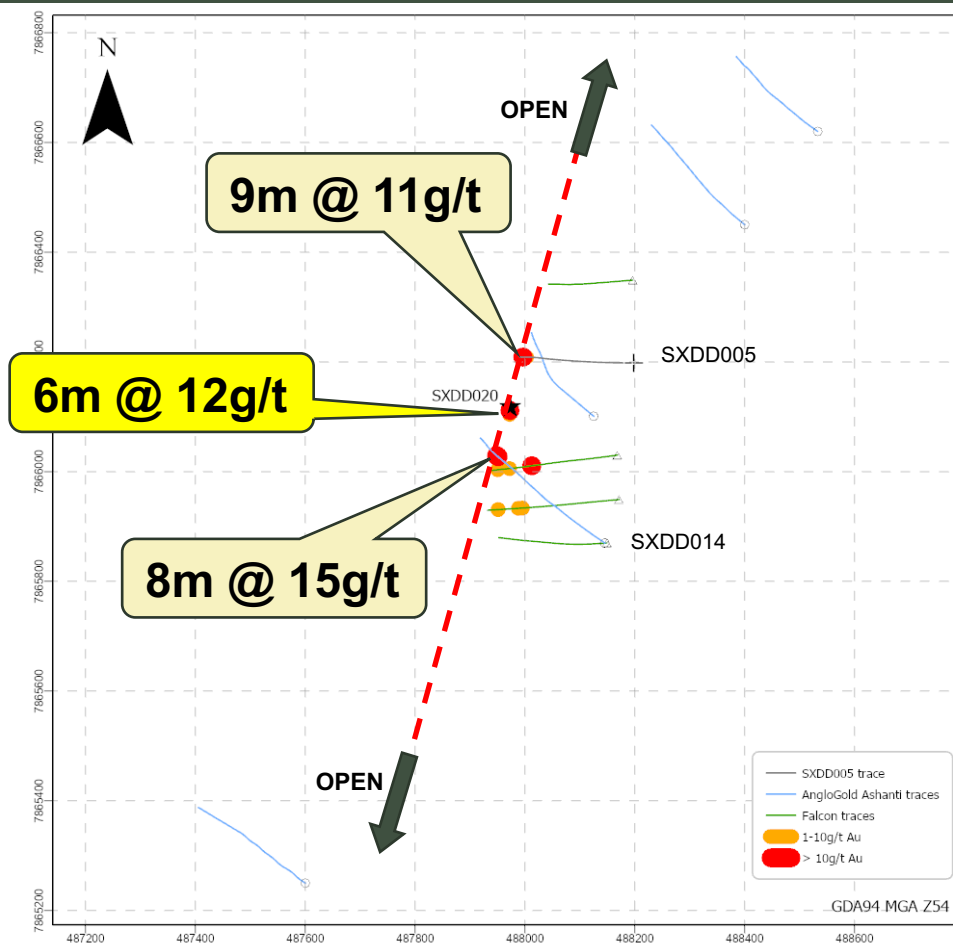
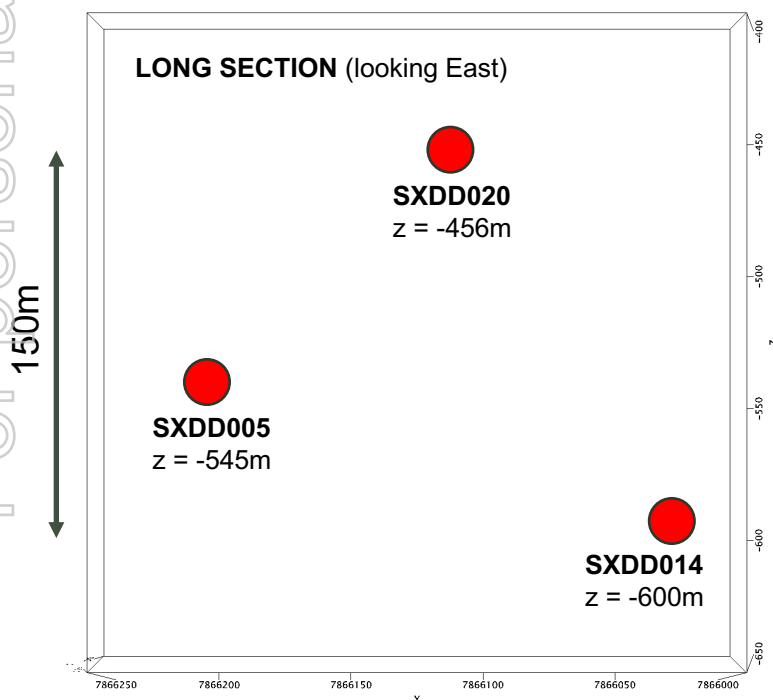
Saxby Project Area

- Geoscience Australia:
“Mapping iron oxide Cu-Au (IOCG) mineral potential in Australia using a knowledge-driven mineral systems-based approach”
- Saxby has the highest possible potential for gold and copper mineralisation
- Neighbouring explorers Newcrest and Red Metal also have moderate to high potential



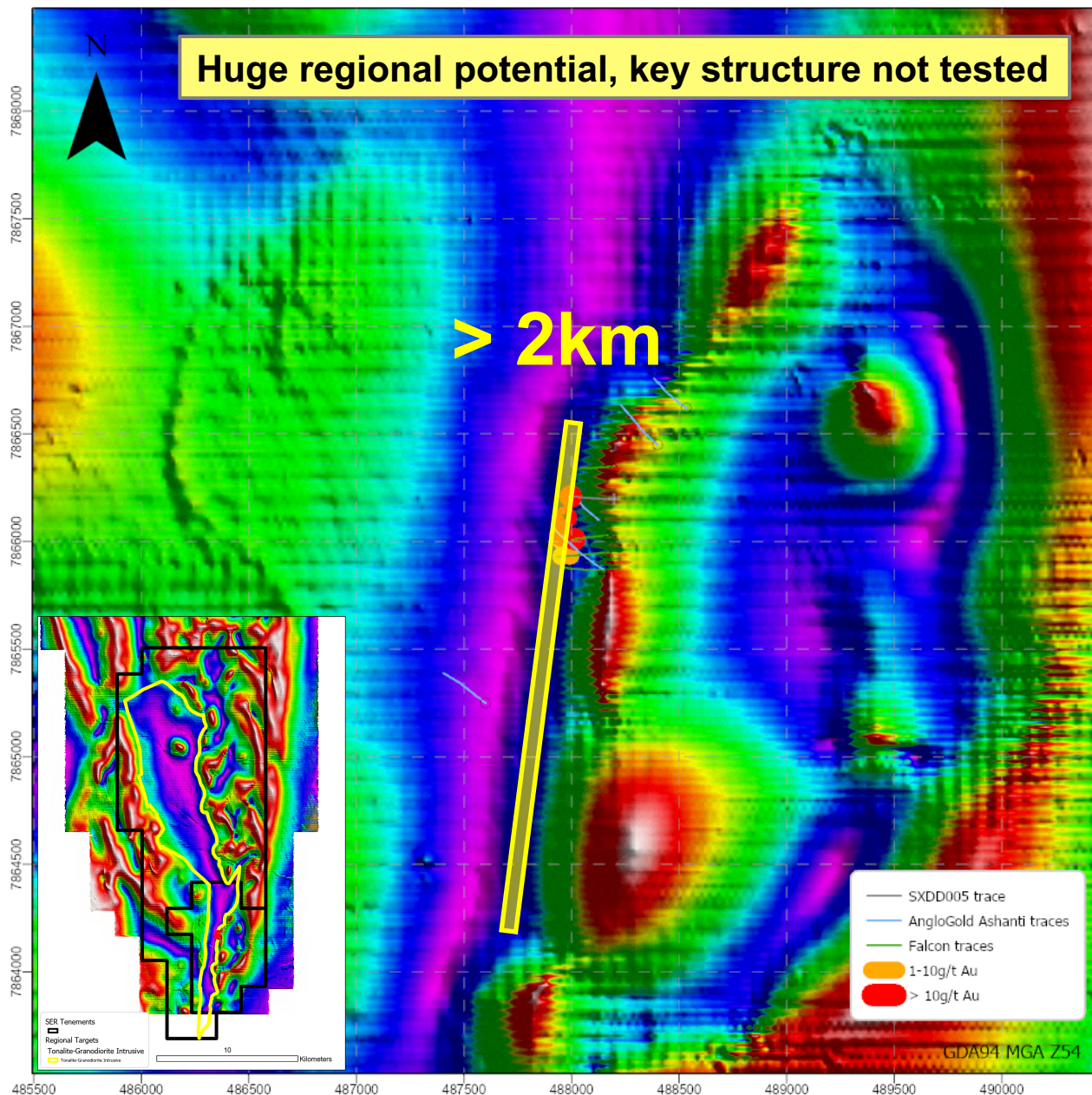
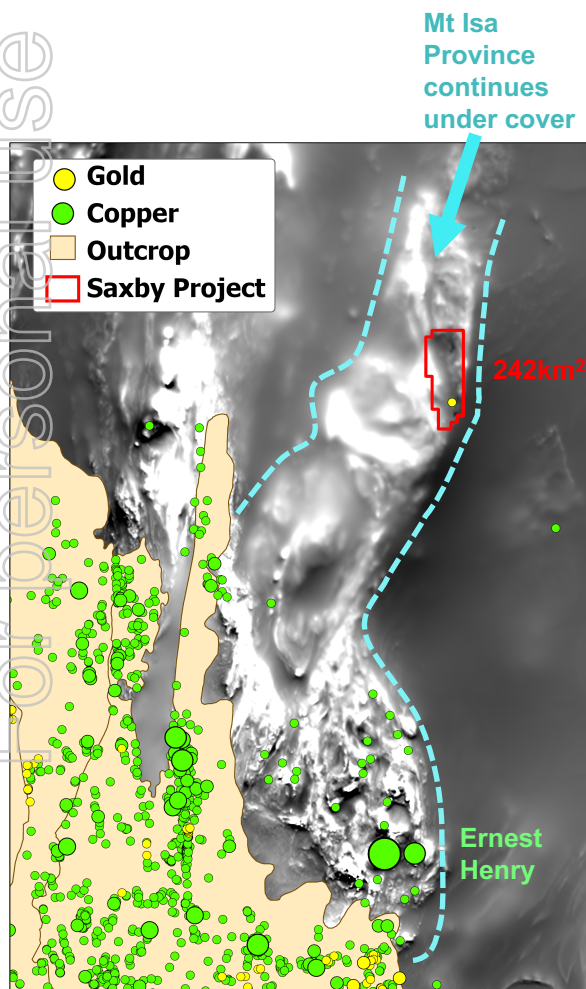
Saxby Gold Project (SER 100%)

- SER hits **6m @ 12g/t Au** in first drill hole
- between **8m @ 15g/t Au** and **9m @ 11g/t Au**
- 200m of strike so far; open to north, south, west
- historical drilling steepened and missed target
- highly anomalous Cu in near misses
- 800m of historical drill core not assayed
- Potential to extend at least a further 2km
- 400m to basement (same as Havieron, half Oak Dam)



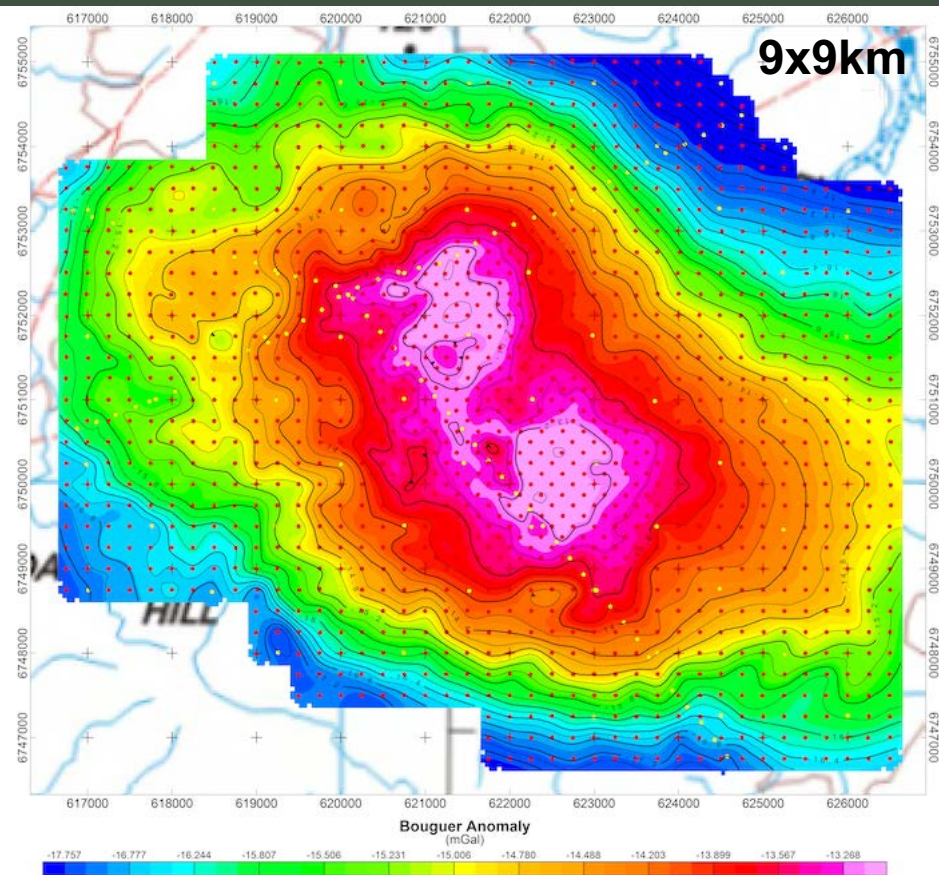
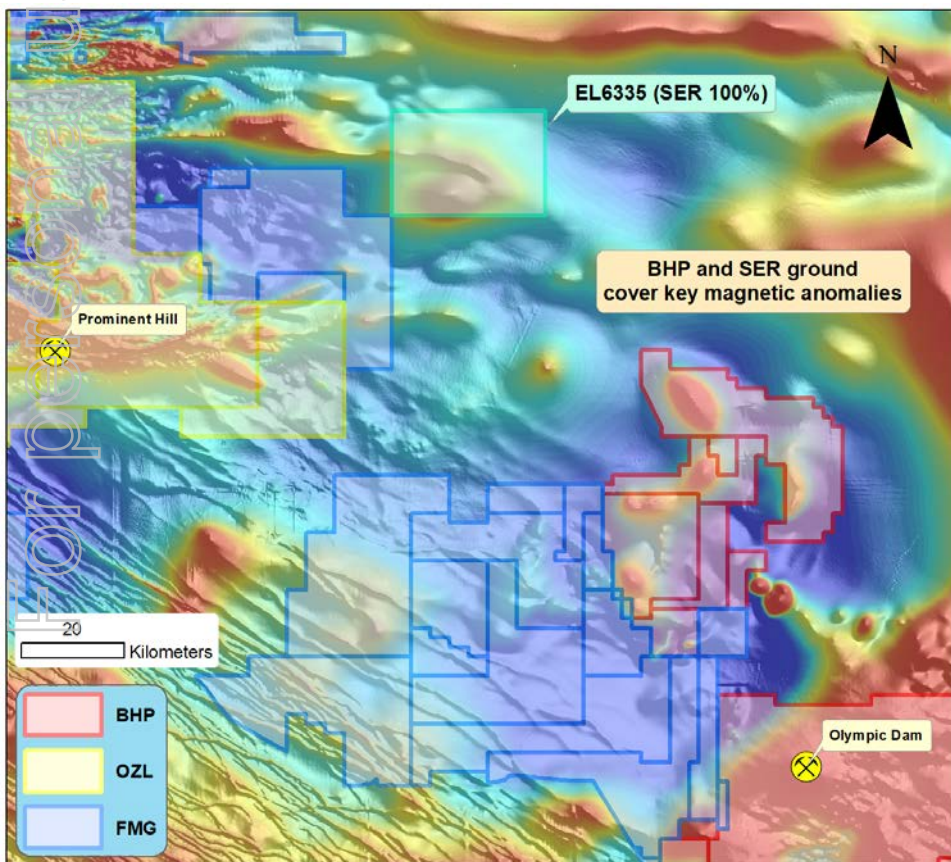
Saxby Gold Project (SER 100%)

Under cover extension of Mt Isa Province, one of the most heavily mineralised terranes in the world



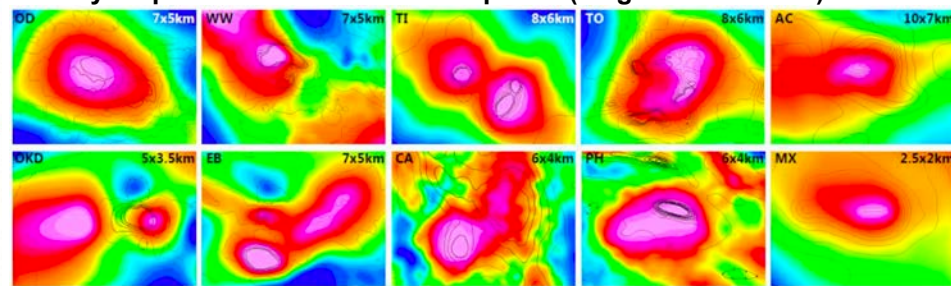
Billa Kalina Copper-Gold (SER 100%)

- Prime location in Olympic Copper-Gold Province
- Long recognised gravity / magnetic anomaly
- 1970s drilling failed to reach basement
- SER highly experienced in this terrane
- Gravity survey reveals compelling density target
- Preparations for drilling underway



see SER ASX Announcement of 28 February 2020:
<https://www.asx.com.au/asxpdf/20200228/pdf/44fkzkdnnf34p.pdf>

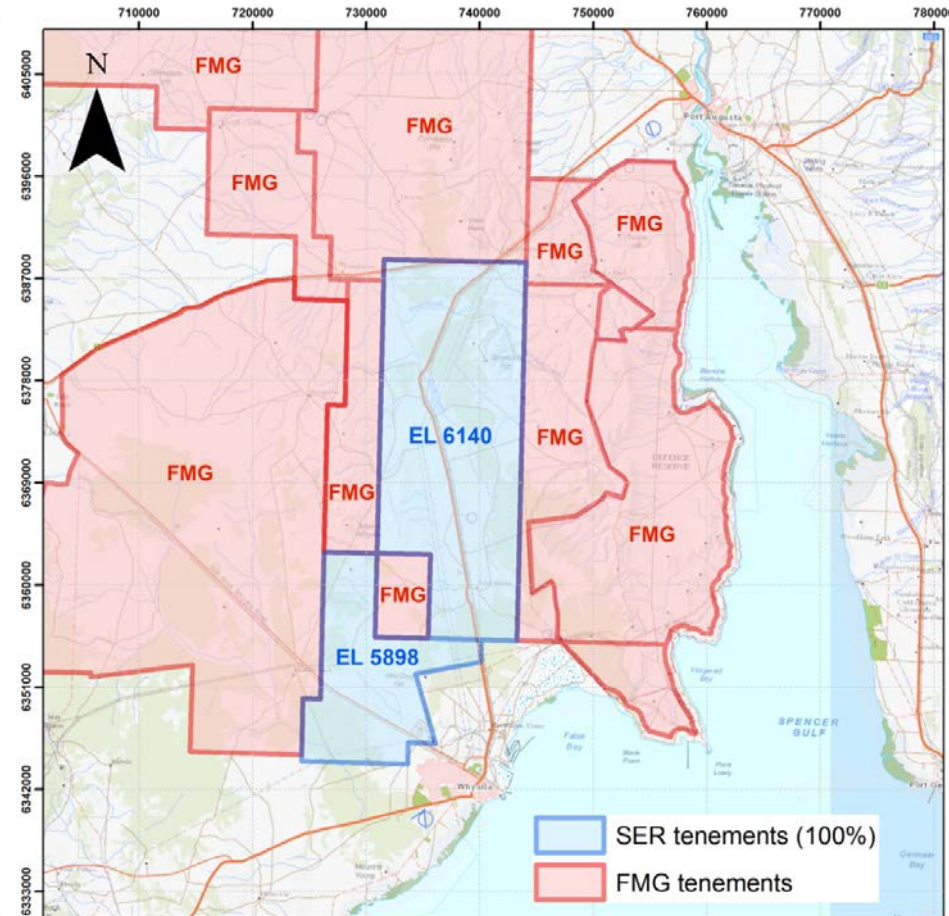
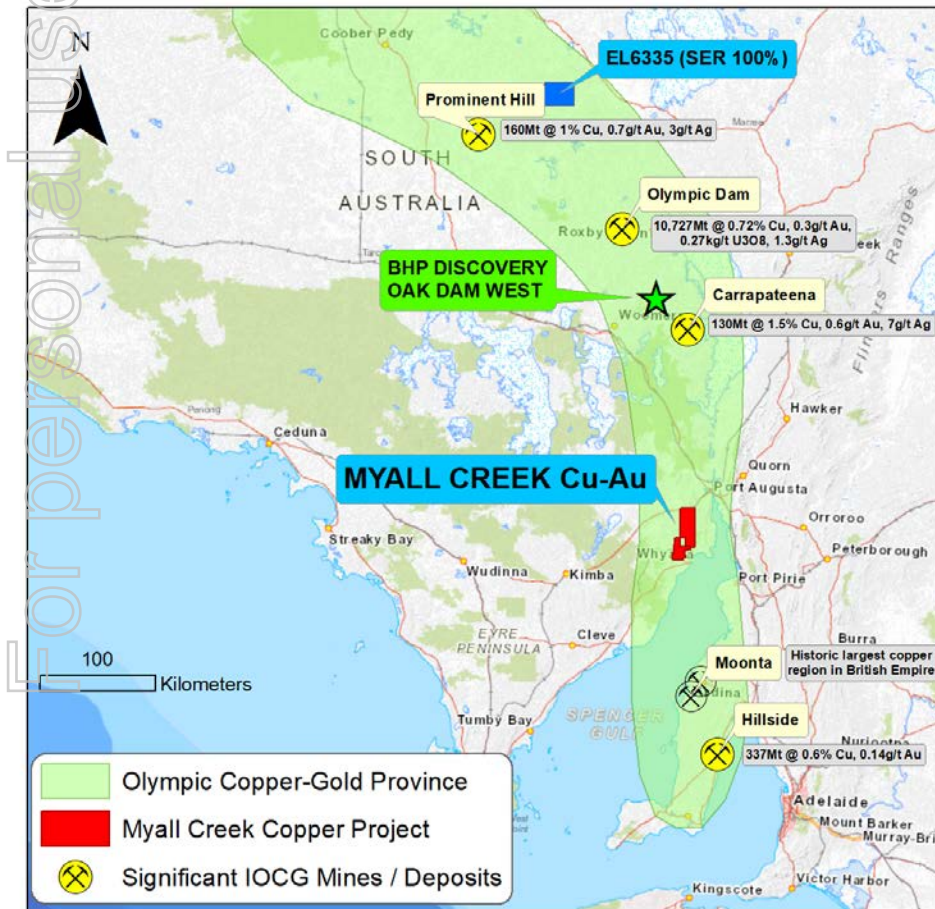
Gravity responses of known IOCG deposits (magnetic contours)



OD: Olympic Dam, WW: Wirrda Well, TI: Titan, TO: Torrens, AC: Acropolis, OKD: Oak Dam, EB: Emmie Bluff, CA: Carrapateena, PH: Prominent Hill, MX: Manxman

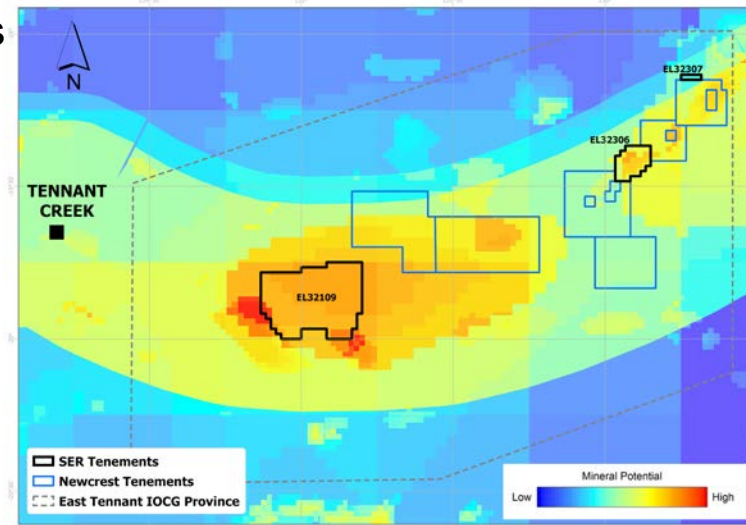
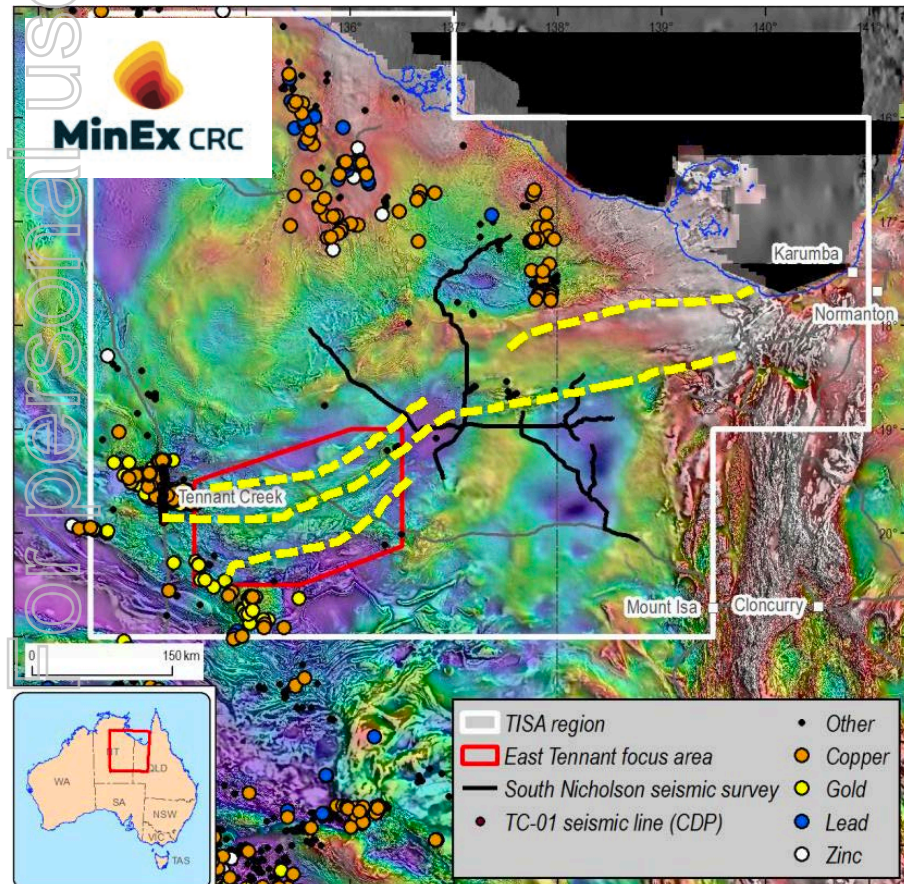
Myall Creek Copper-Gold (FMG earning-in)

- Prime location in Olympic Copper-Gold Province
- Historic drilling intersected extensive copper mineralisation in sediments overlying basement
- FMG to sole fund \$1.5m exploration to earn 80%
- Must include minimum of 1500m drilling to earn-in
- Recently completed detailed magnetic / radiometric survey

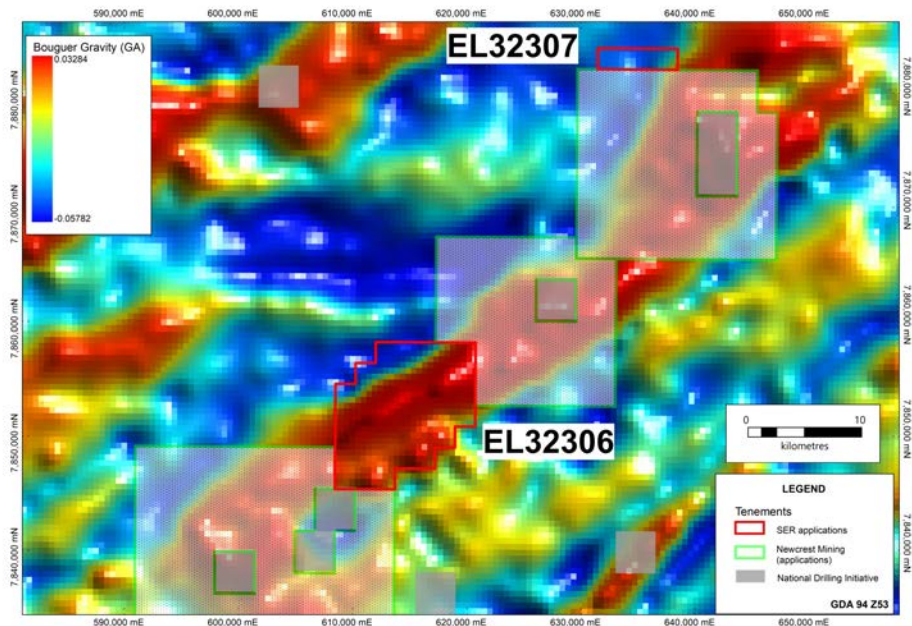


East Tennant Copper-Gold (SER 100%)

- SER has secured highly prized Cu-Au exploration licences in emerging IOCG terrane
- Multiple groups applied when moratorium lifted late 2019
 - SER surrounded by Newcrest
- MinEx CRC to drill multiple fully funded holes in the region



IOCG Prospectivity map of East Tennant with SER applications



Bouguer Gravity map of SER's new applications EL32306 and EL32307

Tennant Creek to Mt Isa (TISA) region with crustal structures over gravity image

Industrial Minerals Assets

- **Ambergate Heavy Mineral Sands JORC 2012 Inferred Resource (SER 100%)**

- 11.2Mt grading 5.1% Heavy Minerals (HM) for a total HM content of 569,000t

low grade Heavy Mineral cut-off of 3% and Slimes cut off of <22%

heavy mineral assemblage: 73% ilmenite (average TiO_2 content of 58.7%), 12% leucoxene, 12% zircon, 0.6% monazite, 2% other

- Surrounded by operating HMS mines

- Mineralisation from surface

- **Uley Graphite Mine**

- SER holds 1.5% Gross Revenue Royalty

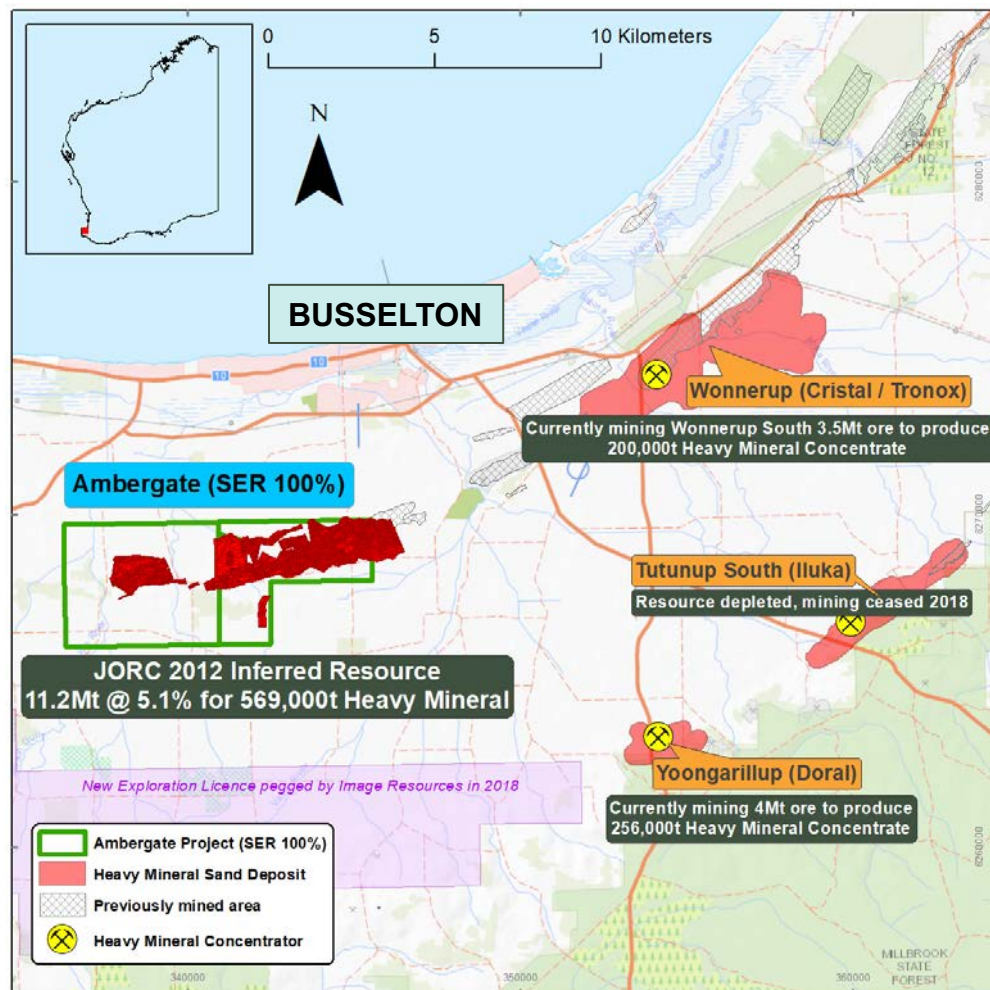
- Lycopodium Mining Study & Reserve



- **Ionic Industries Ltd**

- SER owns 9% of issued capital
- Australia's first graphene company
- Energy storage and water treatment

ionicindustries.com.au



see SER ASX Announcement of 17 April 2018:

<https://www.asx.com.au/asxpdf/20180417/pdf/43t8d8c99q8f1c.pdf>

2020 Work Program

Saxby Gold Project (advanced high-grade discovery)

- Structural / alteration analysis of drill core
- 2020 Drilling
 - along strike, up/down dip, scissor from West
 - step-out south along structure

Copper-Gold Drilling (Tier 1 greenfields exploration)

- Drill **Billa Kalina** gravity target
- FMG geophysics then drilling **Myall Creek**
- National Drilling Initiative drilling at **East Tennant**

Industrial Mineral Assets (adding value)

- Upgrade **Ambergate** resource to allow Scoping Study
- Realise value from **Uley** royalty and **Ionic** shares

